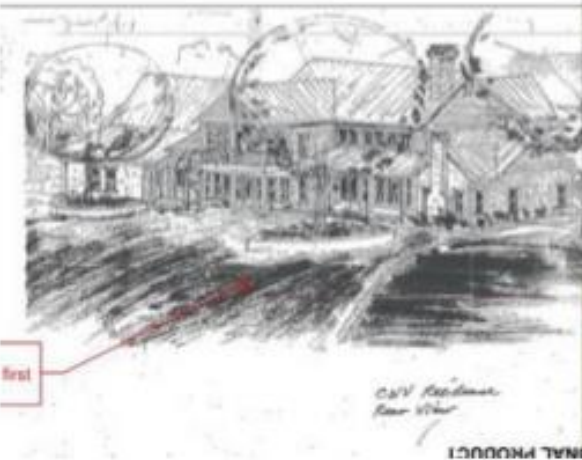
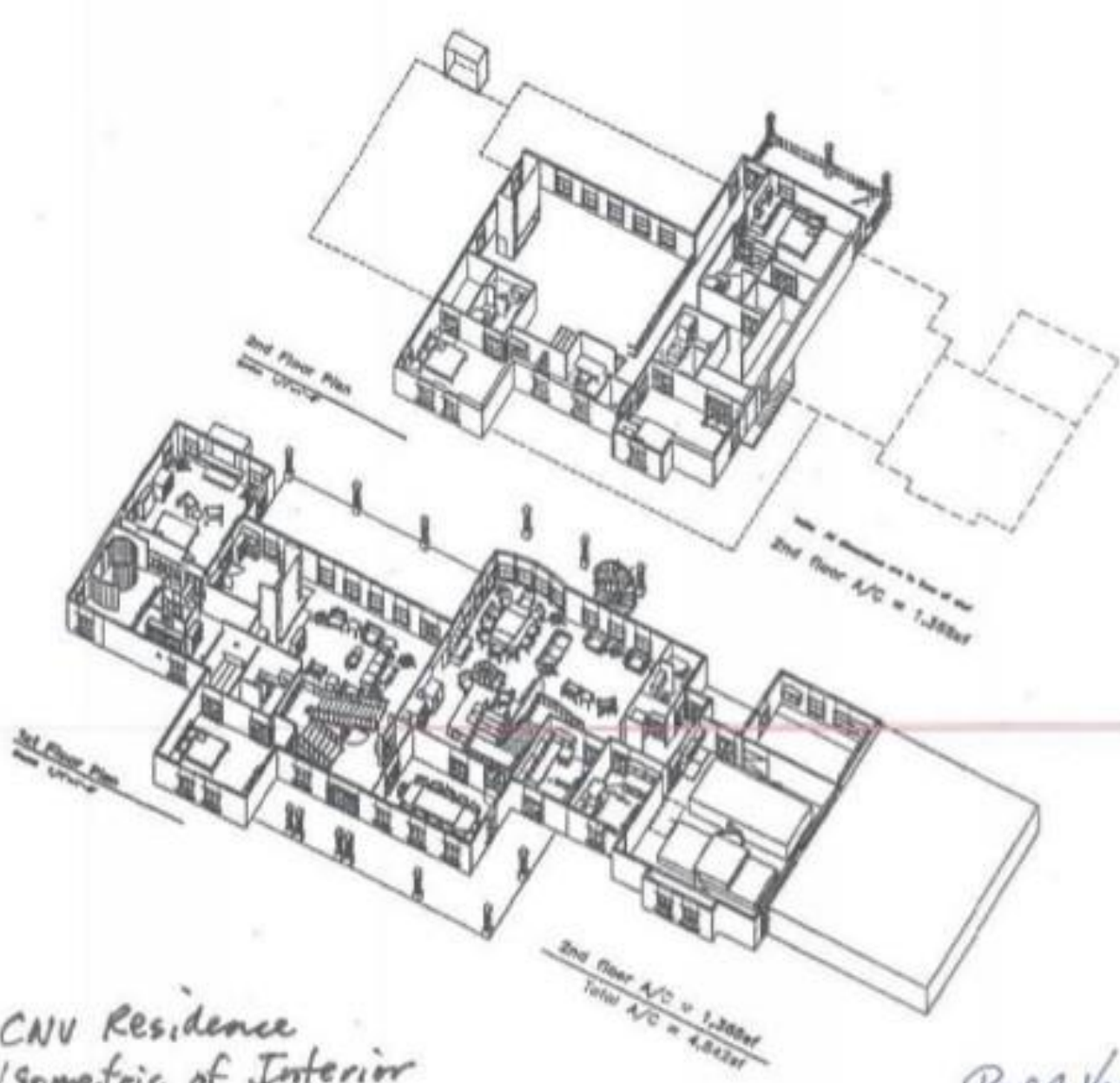


6,000 s.f. CNV Residence – Temple





CNU Residence
Isometric of Interior

Paul J. Verheyden

Basic design remained the same from construction documents to after move-in.



lighting

Ceiling fans save energy

Den - After move-in

Wood trusses were made from reused wood beams demolished from 37,000 s.f. Texas billionaire John Carpenter's house.



Den - After move-in

Items from TX Billionaire, John Carpenter, Las Colinas were used in the construction of this house. I managed demolition of his 27,000 s.f. house for GTE (Verizon's) World Headquarters.

Materials used:

**Spiral stair from his study,
Oak paneling,
Marble countertops
25 Mesquite trees
Leather wall tiles
3 Chandeliers
12 truck loads carrying
25 solid wood beams
12"x24"x25' long**

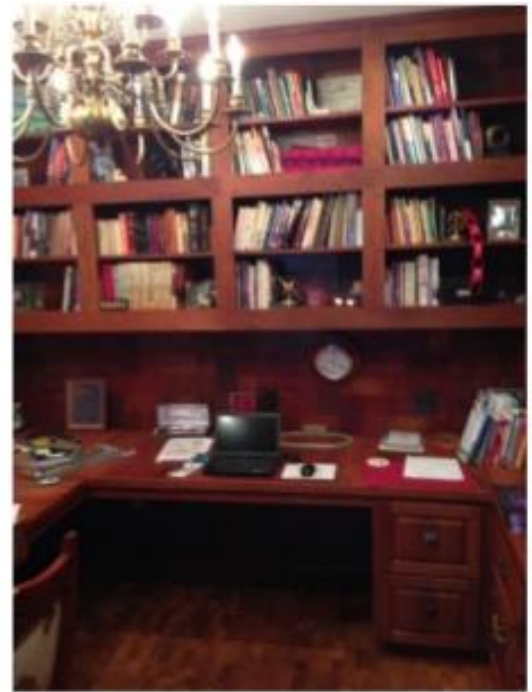




Oak panelling



White marble



Leather wall tiles

Ceiling beams from old barn columns. Chandelier from Carpenter Ranch horse barns.





**Mesquite
star**

Granite kitchen island

